

CAPITAL

80X80 — 31,50"X31,50"



Porcelánico
Porcelain



Polivalente
Versatile



Mate
Matt



Dest. Medio(v3)
Shade Variation: Medium



No Repetitivo
No Repetitive



Relieve
Relief



Antihielo
Frost proof



Rectificado
Rectified



R10
R10



CAPITAL BLANCO ANTI-SLIP
PR8080R



CAPITAL BEIGE ANTI-SLIP
PR8080R



CAPITAL PERLA ANTI-SLIP
PR8080R



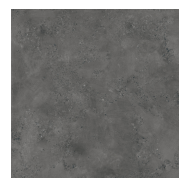
CAPITAL BLANCO
PR8080L



CAPITAL BEIGE RECTIFICADO
PR8080L



CAPITAL PERLA
PR8080L



CAPITAL MARENGO
PR8080E

CARACTERÍSTICAS TÉCNICAS / TECHNICAL CHARACTERISTICS

| Formato Size | Color Colour | MOHS (Dureza) Strength Resistance | PEI | | DESPLIZAMIENTO GLIDE | | | Absorción de Agua Water Absorption | Resistencia Química / Chemical Resistance | | | | | | | | Resistencia a las Manchas Stain Resistance | | | Resistencia Mecánica Mechanical Resistance | | | |
|-----------------|-----------------|--|----------------|--|-------------------------|-------------|-------------|---|---|---|--|----------------------------------|---|---|---|---|--|---|--|---|--|---|--|
| | | | Clase Class | Etapa Abrasión Abrasion Stage | UNE-ENV 12633:2003 | DIN 51130** | DIN 51097** | | P.D. Limpieza Cleaning | Aditivos Agua Piscina Additive pools water | Ácidos y Alcalis Acids and Alkalis (Baja concentración) (Low concentration) | | | | Ácidos y Alcalis Acids and Alkalis (Alta concentración) (High concentration) | | | | Con Acción Trazante Tracing Action | Con Acción Química Oxidante Chemical Oxidize Action | Con Acción Filmica Filmic Action | Resistencia a la helada Frost Resistance | Resistencia a la flexión Bending Resistance |
| | | | | | | | | | | | Ácido Clorhid. Hydrochloric Acid | Ácido Cítrico. Citric Acid | Hidróxido Potásico Potassium Hydroxide | Ácido Clorhid. Hydrochloric Acid | Ácido Láctico Lactic Acid | Hidróxido Potásico Potassium Hydroxide | | | | | | | |
| 80X80 | Blanco | 6 | 4 | 12000 | 1 | R10 | | <0,5% | GA | GA | GLA | GLA | GLA | GHA | | GHA | 5 | 5 | 5 | RESISTE | >35N/mm2 | | |
| | Beige | 6 | 4 | 2100 | 1 | R10 | | <0,5% | GA | GA | GLA | GLA | GLA | GHA | | GHA | 5 | 5 | 5 | RESISTE | >35N/mm2 | | |
| | Perla | 6 | 4 | 2100 | 1 | R10 | | <0,5% | GA | GA | GLA | GLA | GLA | GHA | | GHA | 5 | 5 | 5 | RESISTE | >35N/mm2 | | |
| | Marengo | 6 | 2 | 600 | 1 | R10 | | <0,5% | GA | GA | GLA | GLA | GLA | GHA | | GHA | 5 | 5 | 5 | RESISTE | >35N/mm2 | | |

EMBALAJE / PACKING LIST

| | Pcs / Cajas Pcs / Box | M2 / Cajas Sqm / Box (aprox.) | Kg / Cajas Kg / Box | Cajas / Palet Boxes / Pallet | M2 / Palet Sqm / Pallet (aprox.) | Kg / Palet Kg / Pallet | Pulgadas Inches |
|-------|--------------------------|-------------------------------------|------------------------|---------------------------------|--|---------------------------|--------------------|
| 80X80 | 2 | 1.28 | 26 | 48 | 61.44 | 1248 | 31,50"X31,50" |



Se aconseja uso del Sistema Nivelado
We recommend using Levelling System to fix the tiles

Fecha: 16/04/2026

BALDOCER