

BORA-BORA

280X120 — 110,24"X47,24"



Porcelánico
Porcelain



Polivalente
Versatile



Muy Dest.(v4)
Shade Variation: High



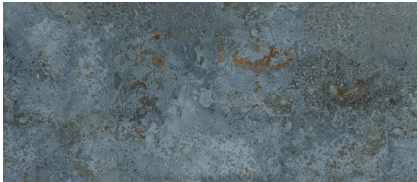
No Repetitivo
No Repetitive



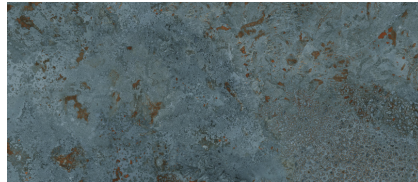
Antihielo
Frost proof



Rectificado
Rectified



BORA-BORA NATURAL
BP2812RB



BORA-BORA PULIDO
BP2812RP

CARACTERÍSTICAS TÉCNICAS / TECHNICAL CHARACTERISTICS

| Formato Size | Color Colour | MOHS (Dureza) Strength Resistance | PEI | | DESPLAZAMIENTO GLIDE | | | Absorción de Agua Water Absorption | Resistencia Química / Chemical Resistance | | | | | | | | Resistencia a las Manchas Stain Resistance | | | Resistencia Mecánica Mechanical Resistance | | | |
|-----------------|-----------------|--|----------------|--|-------------------------|-------------|-------------|---|---|---|--|----------------------------------|---|--|---|---|--|---|--|---|--|---|--|
| | | | Clase Class | Etapa Abrasión Abrasion Stage | UNE-ENV 12633:2003 | DIN 51130** | DIN 51097** | | P.D. Limpieza Cleaning | Aditivos Agua Piscina Additive pools water | Ácidos y Alcalis Acids and Alkalis (Baja concentración) (Low concentration) | | | | Ácidos y Alcalis Acids and Alkalis (Alta concentración) (High concentration) | | | | Con Acción Trazante Tracing Action | Con Acción Química Oxidante Chemical Oxidize Action | Con Acción Filmica Filmic Action | Resistencia a la helada Frost Resistance | Resistencia a la flexión Bending Resistance |
| | | | | | | | | | | | Ácido Clorid. Hydrochloric Acid | Ácido Cítrico. Citric Acid | Hidróxido Potásico Potassium Hydroxide | Ácido Clorid. Hydrochloric Acid | Ácido Láctico Lactic Acid | Hidróxido Potásico Potassium Hydroxide | | | | | | | |
| 280X120 | Natural | 4 | 2 | 600 | 1 | R9 | | <0,5% | GA | GA | GLA | GLA | GLA | GHA | | GHA | 5 | 5 | 5 | RESISTE | >35N/mm2 | | |
| | Pulido | 6 | 2 | 600 | 0 | - | | <0,5% | GA | GA | GLA | GLA | GLA | GHB | | GHB | 5 | 5 | 5 | RESISTE | >35N/mm2 | | |



Se aconseja uso del Sistema Nivelado
We recommend using Levelling System to fix the tiles

Fecha: 25/04/2026

BALDOCER